

Watershed Management and Sediment Gaging

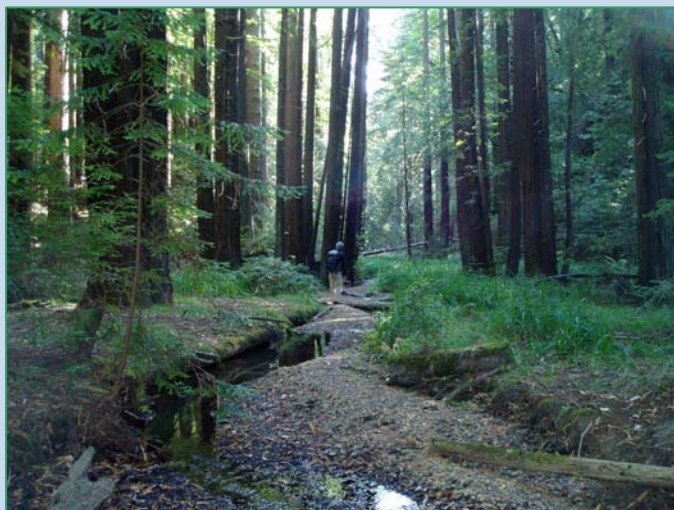
El Corte de Madera Creek Open Space Preserve, San Mateo County, California



Sediment source

Assessment Components:

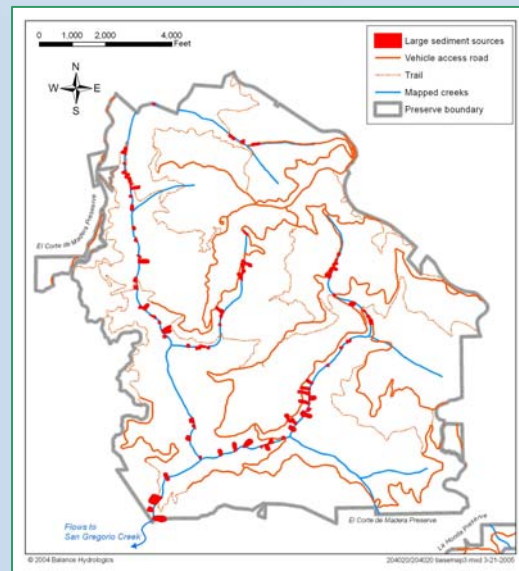
- Sediment source inventory
- V* to measure degree of pool filling by fine sediment
- Stream and sediment gaging to assess discharge of sediment



Excessive deposition

Background

The Preserve is located in the headwaters of El Corte de Madera Creek, part of the San Gregorio Creek watershed, and the waters downstream provide spawning habitat for coho salmon (*Oncorhynchus kisutch*) and steelhead (*Oncorhynchus mykiss*). Although a barrier to upstream migration prevents these anadromous fish from spawning within the Preserve, it is possible that sediment from the Preserve might adversely affect habitat downstream. We are assisting the Midpeninsula Regional Open-Space District with a range of sediment-source and -control assignments, resulting from the erosive local geology and a legacy of redwood logging and road construction, existing uses, and natural physiography.



Balance staff walked creek channels to map and inventory sediment sources

Project Team Accomplishments:

- Sediment-source inventory quantified road and trail contribution to sediment total to be small but not insignificant.
- Sediment gaging showed that the watershed transported similar or lesser amounts of sediment than other nearby watersheds.