

Watershed Management

Geomorphic and Sediment Assessment of the Gazos Creek Watershed, San Mateo and Santa Cruz Counties, California



Sediment deposition in channel

Assessment Components:

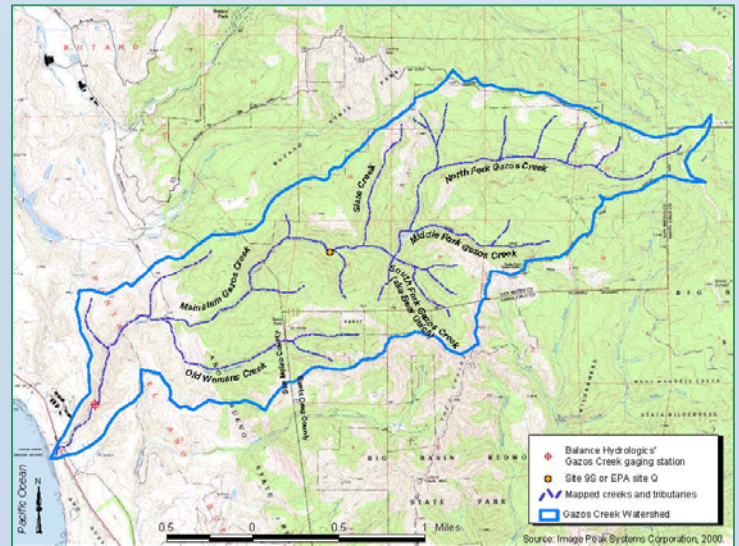
- Sediment source inventory
- Sediment deposition inventory
- Resurvey 5 of 10 sections first surveyed in 1998
- Stream and sediment gaging to quantify sediment budgets



Sediment transport

Background

Sedimentation and channel instability within the Gazos Creek watershed in coastal San Mateo County impair habitat of small populations of endangered coho salmon (*Oncorhynchus kisutch*) and threatened steelhead trout (*Oncorhynchus mykiss*). Balance Hydrologics led a study to describe and quantify the sources of sediment, the transport of sediment through the watershed, and the interaction between the channel and its floodplain.



Balance staff walked creek channels to map and inventory sediment sources

Project Team Accomplishments:

- Sediment-source inventory showed landslides to be the predominant sediment source and woody debris to be the predominant sediment sink.
- Field studies showed where the sediment sources outweighed the sediment sinks.
- Recommended locations and strategies for reintroducing woody debris to the stream to increase sediment depositional environments.