

Watershed Management

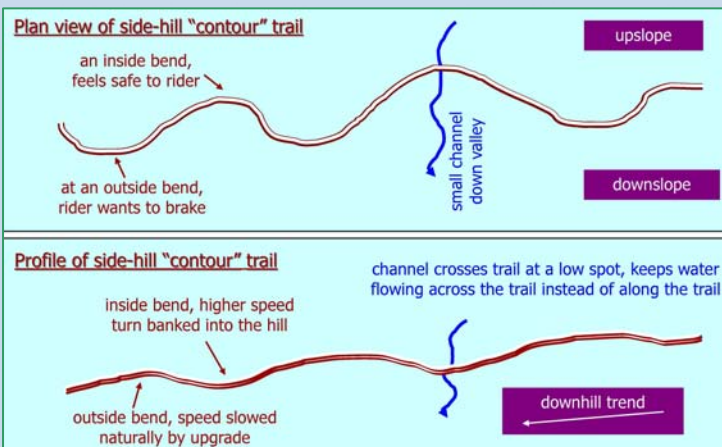
Sanborn County Park Trails Master Plan, Santa Clara County, California



Creek side trail

Watershed Mapping:

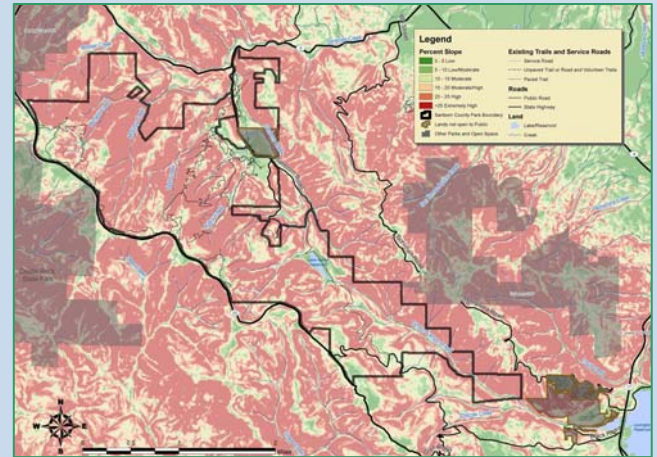
Balance staff compiled a GIS database of physical parameters likely to affect trail suitability, such as geology, slope, landslides and other features. We divided each individual parameter into several levels based on trail suitability, then overlaid the resulting coverages to create an additive layer of composite trail suitability.



Project Goals

Balance Hydrologics was asked to conduct a geologic and hydrologic assessment as part of creating the Sanborn County Park Trails Master Plan. The goals of the project were to:

- create a general map of the park showing areas suitable for trail construction;
- describe the geologic and hydrologic opportunities and constraints for trail construction, based on the mapping effort and field reconnaissance studies;
- recommend practical guidelines for trail design in areas with multiple constraining physical factors.



Recommendations:

We described, based on field reconnaissance studies and review of regional references, specifically how the different areas and physical attributes would likely affect trail construction and maintenance, and how trail building could impact erosion and drainage in those areas. Additionally we outlined a series of trail-building techniques, assigning suggested practices to reduce trail impacts to each of the areas of poor trail suitability.